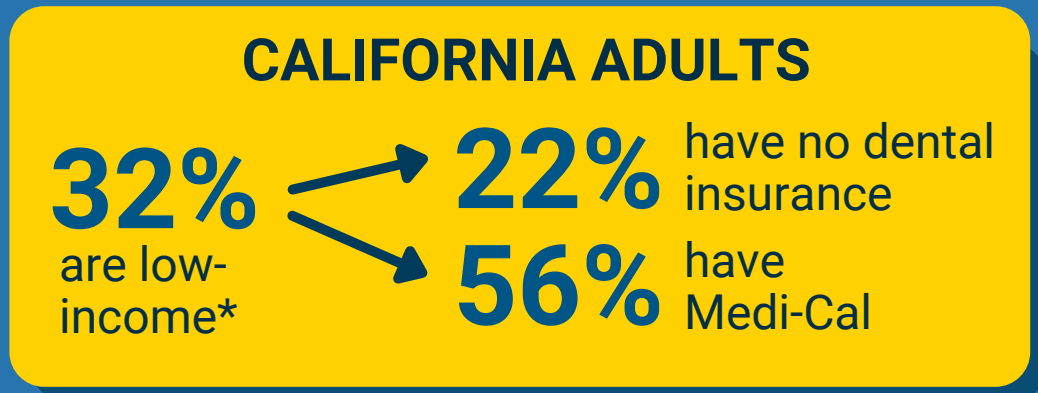


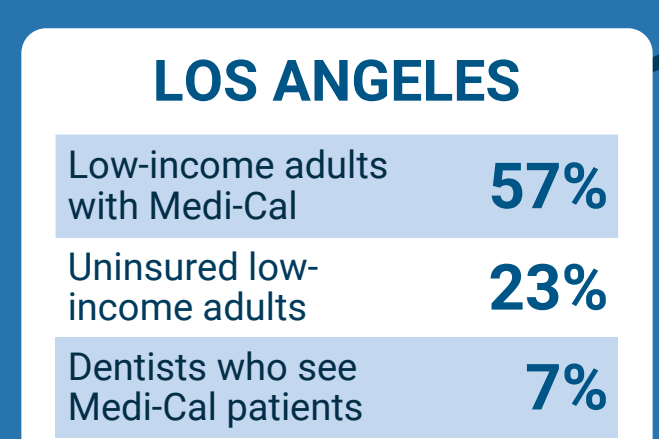
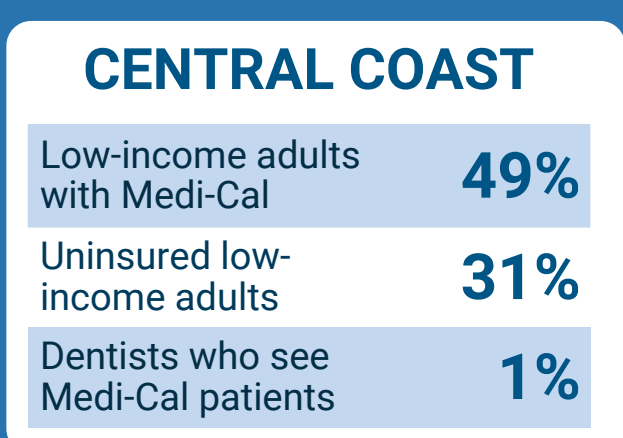
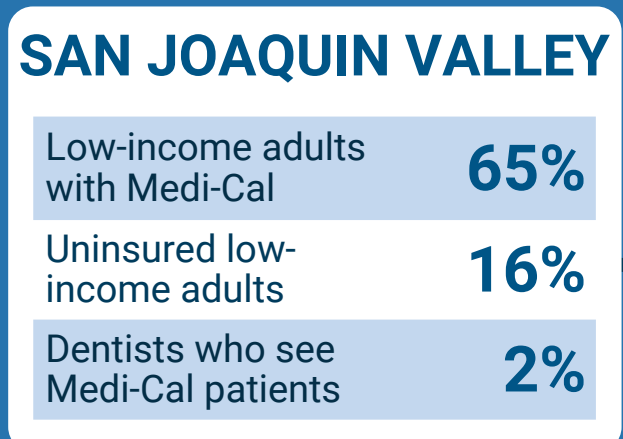
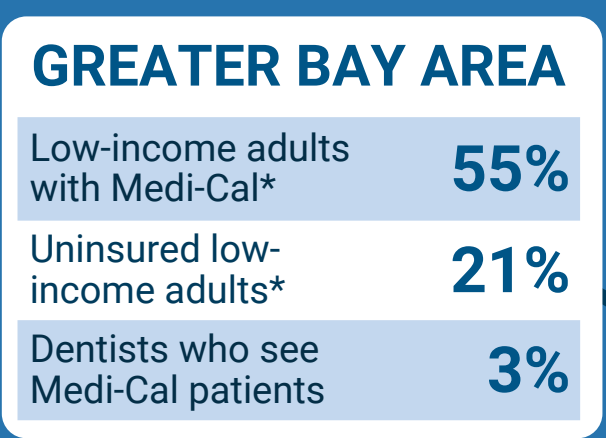
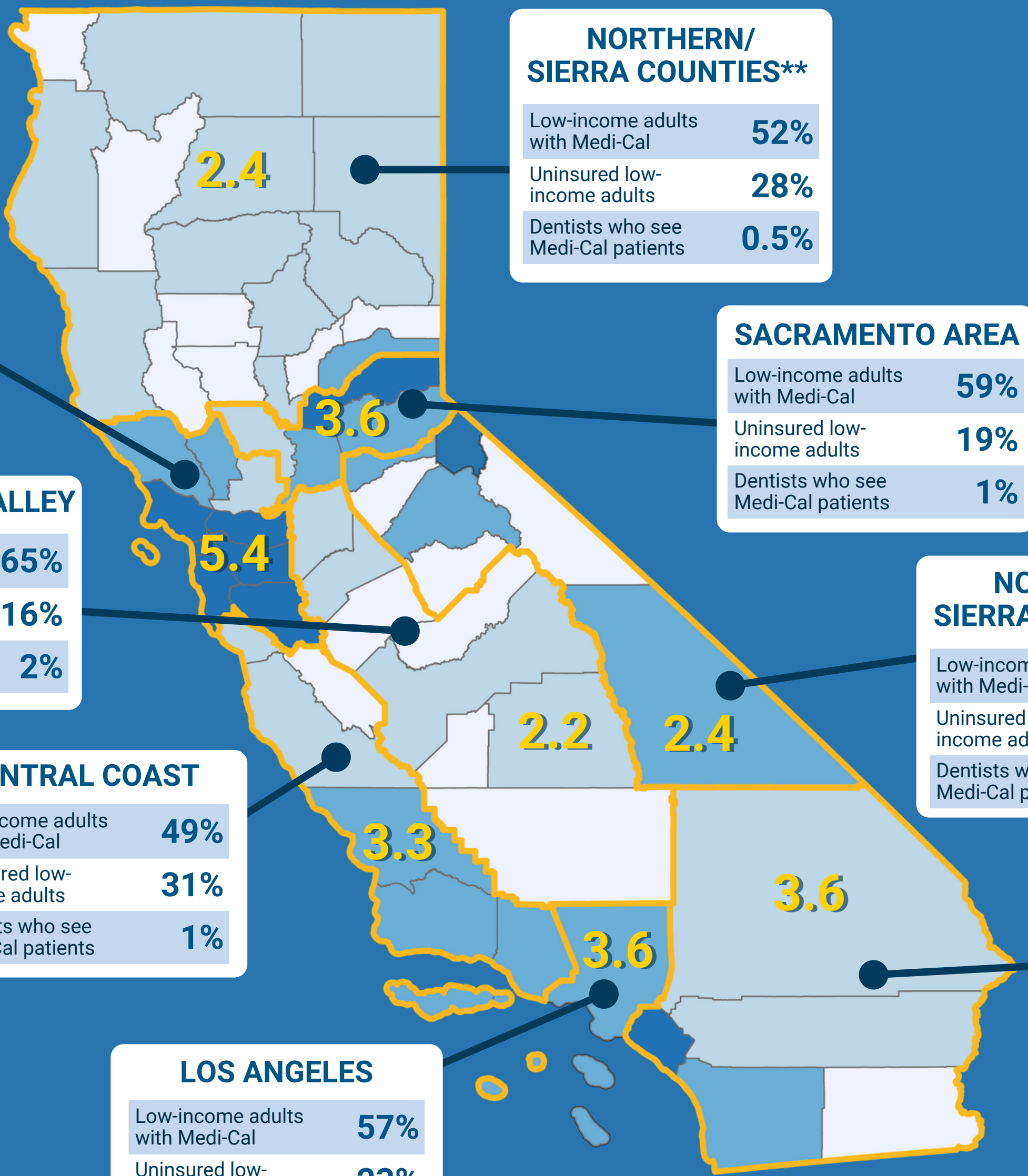
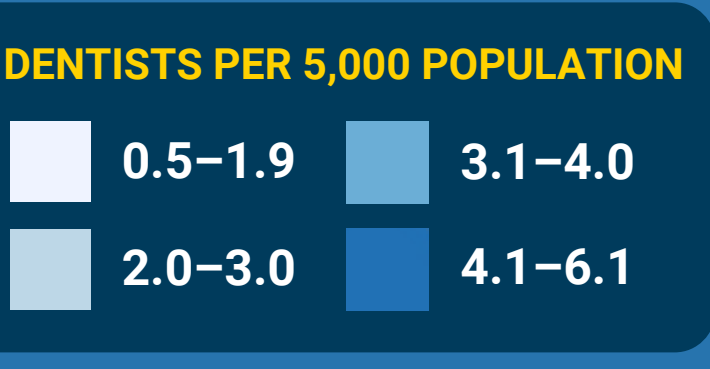
Access to Dentists for **Low-Income Californians** Differs by Where They Live

Access to dental care partially depends on the availability of dentists and their willingness to provide care to patients who lack dental insurance or have Medi-Cal. Promoting access to dental care for low-income residents requires knowledge of the geographic distribution of dentists and their patient characteristics.

There are more practicing dentists in the Greater Bay Area (5.4 per 5,000 population) and more populated counties of California. There are more practicing dentists in Los Angeles and other Southern California counties (7%) who see Medi-Cal patients.



There are **3.56** practicing dentists per **5,000 population** in California



IMPLICATIONS

- Develop strategies to attract more dentists to low-income areas.
- Promote dentist participation in Medi-Cal.
- Promote the availability of other providers and service alternatives, such as a dental therapist, mobile dentistry, or teledentistry.

*Low-income includes 0%–199% FPL (federal poverty level)
 **Northern/Sierra includes two noncontiguous areas separated by the Sacramento region. Counties included in each region can be found at <https://bit.ly/34yvztp> (logon required)